

**Head Office:**  
Dixon Kelley Estate Agents  
1 Penn Court  
Station Road, West Moors  
Dorset. BH22 0JJ

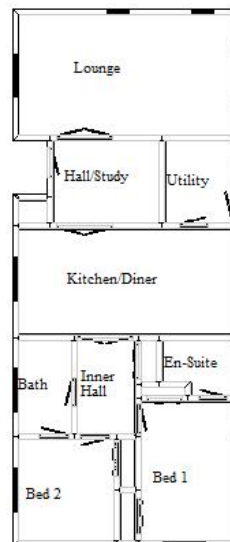
# Dorset Park Homes

**DRAFT**

**Telephone: 01202 877511**

[www.dorsetparkhomes.com](http://www.dorsetparkhomes.com)

**16 Upton Glen,  
Ringstead, Weymouth. DT2**



This drawing has been prepared for diagrammatic purpose only. Not to scale.

**Additional photographs can be viewed at [www.dorsetparkhomes.com](http://www.dorsetparkhomes.com)**

## 2-Bedroom 'Omar Colonial' Park Home approx 50' x 20'

- **PICTURESQUE LOCATION**
- **Entrance Hall/Study Area**
- **Lounge**
- **Kitchen/Diner & Utility Room**
- **Inner Hall**
- **2-Double Bedrooms**
- **Bathroom/En-Suite**
- **En-Suite Shower Room**
- **Gas Central Heating**
- **PVCu Double Glazing**
- **Parking on Plot**
- **Beautiful Landscaped Garden**
- **Age Restriction 45+**
- **Dog Considered**

**Pitch Fee: approx £1600 per annum**

**PRICE £184,950**

### Approximate room dimensions and brief description:

- **ENTRANCE HALL/STUDY: 9'11" x 7'8"**. Feature beam. Wood style floor. Double glass doors to lounge & kitchen/diner.
- **LOUNGE: 19'4" x 11'1"**. Feature fireplace with inset fire (untested) and feature surround. 2 radiators. PVCu double glazed window and 2 full height windows. Double glazed French doors onto terrace.
- **KITCHEN/DINER: 19'6" x 9'10"**. **Beautifully fitted with quality custom designed kitchen.** Roll top work surfaces with a good range of wall and base cupboards with inset butler sink having mixer tap fitted. Integrated fridge/freezer & dishwasher (appliances untested). Space for cooker with extractor hood over. Feature beam. Oak wood style floor. Radiator. PVCu double glazed window. Door to:
- **UTILITY ROOM: 7'8" x 6'2"**. Range of cupboards. Integrated washing machine (untested). PVCu double glazed window and door to garden.
- **INNER HALL.** Wood style floor. Airing cupboard. Spotlights.
- **BEDROOM 1: 12'3" x 8'8"**. 2 fitted wardrobes with mirror fronted doors. Loft access. PVCu double glazed full height window and side aspect window. **EN-SUITE:** Shower cubicle with shower fitted. Low level WC. Vanity unit with wash hand basin. Spotlights. Radiator. PVCu double glazed window.
- **BEDROOM 2: 9'4" x 8'6"**. Fitted wardrobe with mirror fronted doors. PVCu double glazed window.
- **BATHROOM/EN-SUITE:** Part tiled walls. Bath with shower over. Low level WC. Vanity unit with inset sink unit. PVCu double glazed window. Spotlights. Door to bedroom 2.

**VIEWING STRICTLY BY APPOINTMENT WITH THE VENDOR'S AGENT Dorset Park Homes 01202 877511**

**IMPORTANT NOTE:** These particulars are believed to be correct but their accuracy is not guaranteed. They do not form part of any contract. Nothing in these particulars shall be deemed to be a statement that the property is in good structural condition or otherwise, nor that any of the services, appliances, equipment or facilities are in good working order or have been tested. Purchasers should satisfy themselves on such matters prior to purchase Ref:W02828

*The recommended specialist in Park Home sales*  
Proprietor: Simon Dixon



Zoopa.co.uk

rightmove.co.uk  
The UK's number one property website



