

Head Office:
Dixon Kelley Estate Agents
1 Penn Court
Station Road, West Moors
Dorset. BH22 0JJ

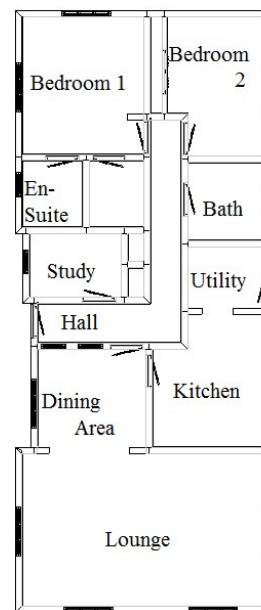
Dorset Park Homes

DRAFT

www.dorsetparkhomes.com

Telephone: 01202 877511

24 Dewlands Park, West Close, Verwood, Dorset. BH31 6PR



This drawing has been prepared for diagrammatic purpose only. Not to scale.

2 Bedroom 'Omar Sheringham' Park Home approx 48' x 20'

Accommodation & approximate room dimensions:

- **Entrance Hall:** Cloaks cupboard. Airing cupboard.
- **Kitchen:** approx 10'10" x 9'3". Good range of floor and wall units. Built in high level double oven, gas hob & cooker hood over (untested). Integrated fridge/freezer & dishwasher (appliances untested).
- **Utility Room:** approx 6'3" x 5'1". Cupboard housing gas fired combination boiler (untested). Integrated washing machine (untested).
- **Lounge:** approx 19'3" x 12'6". Feature fireplace with fire fitted (untested).
- **Dining Area:** approx 8'11" x 8'1".
- **Study:** approx 7'7" x 5'6". Fitted desk & drawers.
- **Bedroom 1:** approx 11'2" x 9'5". Walk in wardrobe. Fitted furniture.
- **Bedroom 2:** approx 11'5" x 9'5". Fitted wardrobes.
- **En-Suite Shower Room:**
- **Bathroom:**
- **Garden:** Laid to lawn & patio area. Shed & Greenhouse.
- **Gas Central Heating.** (system untested)
- **PVCu Double Glazing.**
- **Parking on Plot**
- **Semi/Retirement Park 50+ & Pets Considered**

Lovely Spacious Home



Additional photographs at www.dorsetparkhomes.com

Price £169,950

Pitch Fee approx £150.73 per month

VIEWING STRICTLY BY APPOINTMENT WITH THE VENDOR'S AGENT Dorset Park Homes 01202 877511

IMPORTANT NOTE: These particulars are believed to be correct but their accuracy is not guaranteed. They do not form part of any contract. Nothing in these particulars shall be deemed to be a statement that the property is in good structural condition or otherwise, nor that any of the services, appliances, equipment or facilities are in good working order or have been tested. Purchasers should satisfy themselves on such matters prior to purchase Ref.W03195

The recommended specialist in Park Home sales

Proprietor: Simon Dixon

