

**Head Office:**  
Dixon Kelley Estate Agents  
1 Penn Court  
Station Road, West Moors  
Dorset. BH22 0JJ

# HAMPSHIRE PARK HOMES

**DRAFT**

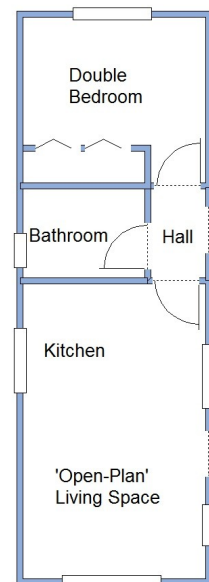
[www.hampshireparkhomes.com](http://www.hampshireparkhomes.com)

**Telephone: 01202 877511**

**9 King George Park, Christchurch Road, New Milton. BH25 6QJ**



**New Home—Ready for Early Occupation!**



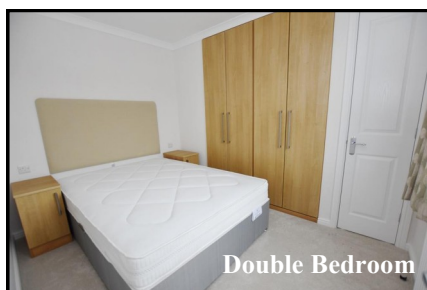
This drawing has been prepared for diagrammatic purposes only. Not to scale

## 1 Bedroom Park Home approx 32' x 11'

Accommodation & approximate room dimensions:

- Prestige Homeseeker Park Home 2021
- 'Open-Plan Living Space: approx 16'2" x 9'11"'. Feature fireplace & bay window.
- Kitchen: Range of floor & wall units. Built-in oven, hob & extractor fan. Space for washing machine & fridge/freezer.
- Double Bedroom: approx 9'11" x 9'1" including fitted wardrobes & bedside units. Linen cupboard.
- Bathroom: Panelled bath with mixer tap. Vanity wash basin & WC. Heated towel rail.
- Gas Central Heating (system untested)
- PVCu Double-Glazing
- Fully Furnished including carpets & curtains
- Parking on Plot
- Patio Garden
- Age Restriction 50+
- No Pets Allowed
- Small, well maintained Residential Park close to a wealth of amenities & outstanding coastline.

## Convenient Location



Double Bedroom



Patio Garden

**Price £110,000**

**VIEWING STRICTLY BY APPOINTMENT WITH THE VENDOR'S AGENT Dorset Park Homes 01202 877511**

**IMPORTANT NOTE:** These particulars are believed to be correct but their accuracy is not guaranteed. They do not form part of any contract. Nothing in these particulars shall be deemed to be a statement that the property is in good structural condition or otherwise, nor that any of the services, appliances, equipment or facilities are in good working order or have been tested. Purchasers should satisfy themselves on such matters prior to purchase Ref:W04375

**Pitch Fee: approx £177 per calendar month**

**Subject to Annual Review**

**Council Tax Band: 'A' Tenure: 1983 Mobile Homes Act Agreement**

*The recommended specialist in Park Home sales*

Partner: Simon Dixon

